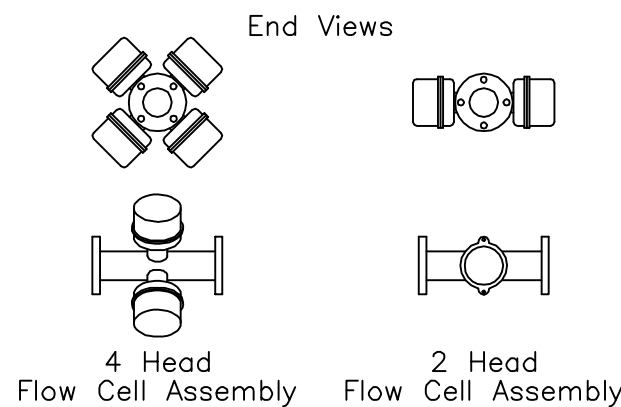
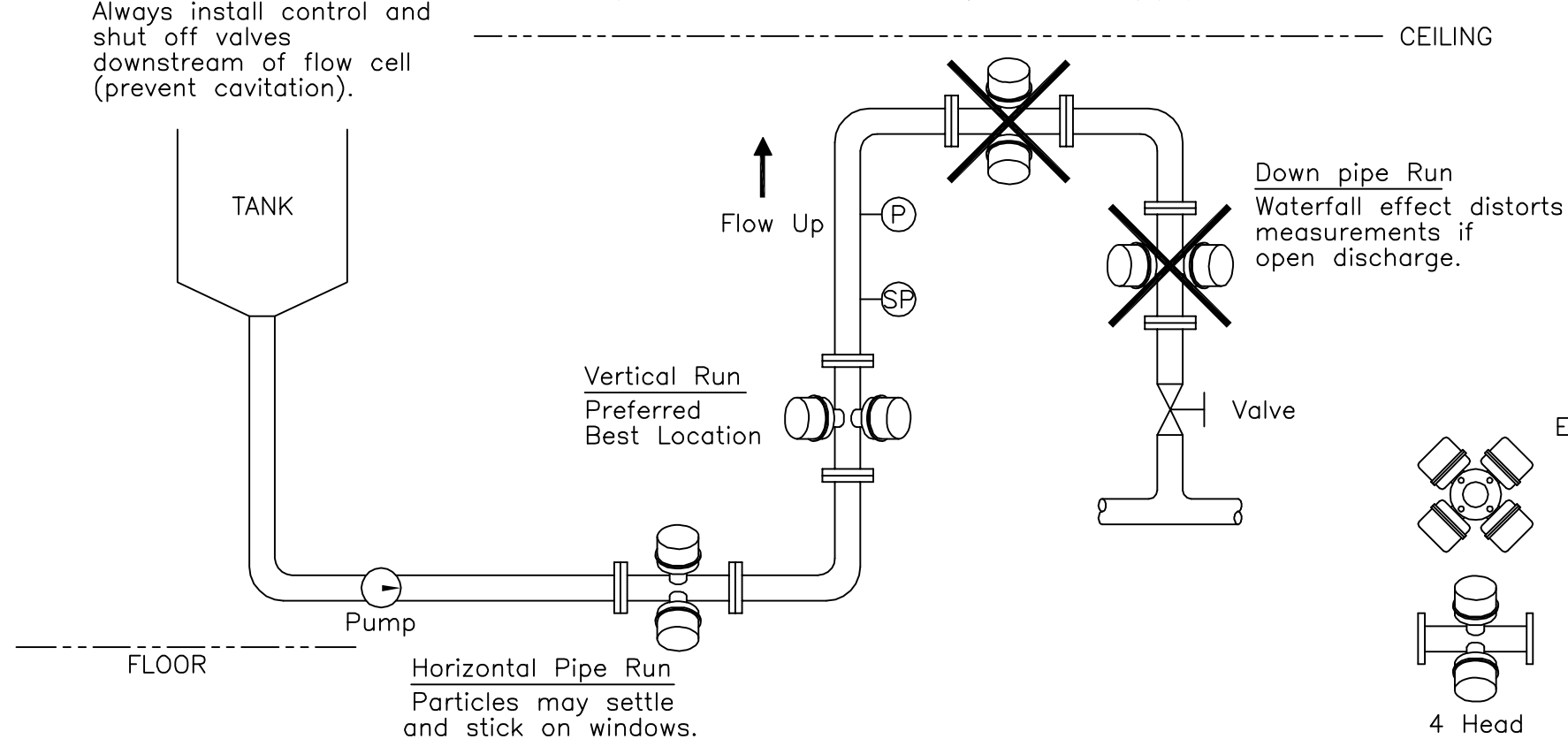


Notes:

1. Measuring point must be completely filled at all times. Operating with less than full pipe, will result in measurement error.
2. Bolts and Nuts: to install make sure there is sufficient room next to pipe flanges.
3. To clean flow cell windows clean have liquid solution at more than 5fps flow.
4. Transportation delay between control point and measurement point to be less than 10% dead time.
5. Install SP (sample port) as required. The point should be within 1 meter of sensor. Meter need to be view from the sample point.
6. Do not insulate sensor.
7. For pipe size DN > 150 use bypass.
8. Mixing point – Install analyzer down stream of mixing point and at an adequate distance 30 x OD application dependent.

Vessel Outlet  
Always install control and shut off valves downstream of flow cell (prevent cavitation).

Highest Point of Pipe Run  
(Air bubbles and foam may collect in pipe)



<b>McNAB, INCORPORATED</b>		
20 N. MacQUESTEN PKWY., MT. VERNON, NY, 10550-1897 USA (914) 699-1616 TELEFAX (914) 699-1671 ©McNAB, 2000 www.themcnab.com		
PIPE INSTALLATION GUIDE, FLOW CELL ASSEMBLY		
24 APRIL 2002		REV. C
SCALE:	A01-14	SHEET 1 OF 1